



# EMERGENCY SHUTDOWN PROCEDURES

# BELL 206



The Bell 206's fuel shutoff is located on the instrument panel. In the image the label "FUEL VALVE", "ON, and "OFF" are highlighted in yellow. Seen here it is in the "ON" position.

To cut the fuel flow to the engine simply lift the spring loaded, red cover then move the switch downward to the "OFF" position.

The engine may continue to run for a minute or so, just on the remaining fuel in the fuel lines.



Fire Extinguisher located between the front seats. May vary per individual aircraft configuration.



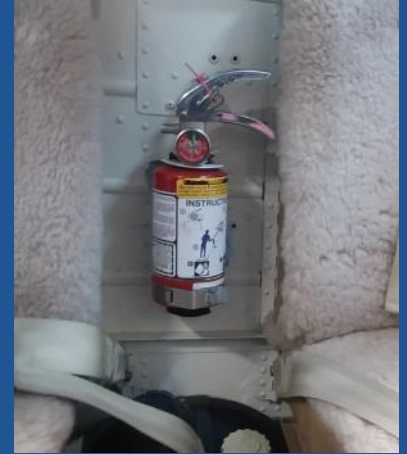
# BELL 407



Similarly, the Bell 407's fuel shutoff is located on the instrument panel, like the 206. In the image the fuel shutoff is circled in red. Seen here it is in the "ON" position.

To cut the fuel flow to the engine simply lift the spring loaded, red cover then move the switch downward to the "OFF" position.

The engine may continue to run for a minute or so, just on the remaining fuel in the fuel lines.



Fire Extinguisher located between the front seats. May vary per individual aircraft configuration.



# ASTAR



The AS350 AStar has an easily accessible fuel shutoff, circled in red, and electrical master switch, circled in yellow.

The fuel shutoff lever has “safety wire” keeping it locked forward to prevent an accidental shutoff. This is thin brass wire that will break easily when the lever is forced back. The lever will lock in the OFF position when it has been fully engaged.

Simply press the red master electrical button to disengage electrical power.





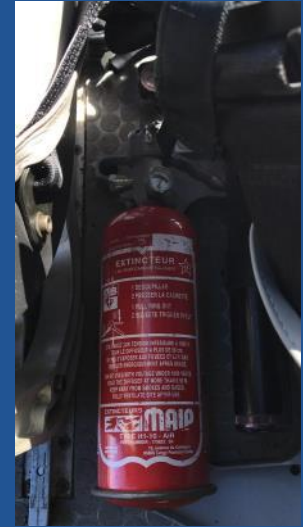
# EC 130



The EC 130 fuel shutoff is located overhead, on the ceiling of the aircraft.

Simply move the red gate blocking the lever, then pull the lever aft, toward the tail of the aircraft.

Again, as with all of these aircraft, the engines may run for a minute after the fuel has been cut.



Fire Extinguisher located between the front seats. May vary per individual aircraft configuration.



# Agusta A109



The A109 is a twin engine aircraft, and so has a shutoff for each engine. The fuel, in red, and engine, in yellow, shutoffs are pictured here in the off position.

To cut the fuel flow to each engine simply lift up on the red triangle and pull the switch aft, towards the tail. To immediately shut down the engines just twist the switch to “IDLE”. Then press the switch down while twisting left (counter clockwise) to the “OFF” position. Repeat for the other engine.



Fire Extinguisher located to the right of the pilot(right) seat. May vary per individual aircraft configuration.



# EC 145



The EC 145 is also a twin engine helicopter. On the center panel we can see the emergency shutoff switches, circled in red, and the master battery switch, circled in yellow.

Simply lift the red cover for the shutoff and press the button, and repeat for the other engine. For the battery, lift the switch up and move it downward to the off position.

